

Mooody owl mittens



SIZES: To fit woman small/medium

NEEDLES: one set of 2,5 mm/US 2 DPNS

MATERIALS:

Qualitas sock 75% superwash wool, 25% polyamid

Yarn substitutes:

Sock wool BC garn 75 % superwash wool
25 % nylon,

Arwetta 80 % super merino wool, 20 % nylon

Drops Fabel, Drops alpaca

GAUGE: 22 sts and 22 rows in palm pattern (1 blue x 1 white) on needles 2,5 mm/US 2 = 5 cm/2 inches

ABBREVIATIONS:

- CC – Contrasting color
- MC – Main color
- ▣ SSK – slip two stitches as if to knit, knit through back loop
- ▣ K2tog – Knit two stitches together
- St - stitch



DIRECTIONS:

Cast on 80 sts in CC (*blue in chart*) and divide on four needles, 20 sts on each needle. Knit 12 rows 1 x 1 rib with CC. Start pattern, the chart is read from bottom to top and from right to left.

Row 28: place all 40 sts for the owl part of the mitten on to one needle.

Row 40: knit the 16 thumb sts (*lined with pink in chart*) and place them on a safety pin or scrap yarn.

On the next row loosely cast on 16 sts in pattern. When there are 32 sts left graft together using the Kitchener's graft technique. Fold the 1 x 1 rib part into the mitten and sew it to the inside, be careful not to sew *through* the mitten to avoid the sts to show on the outside.

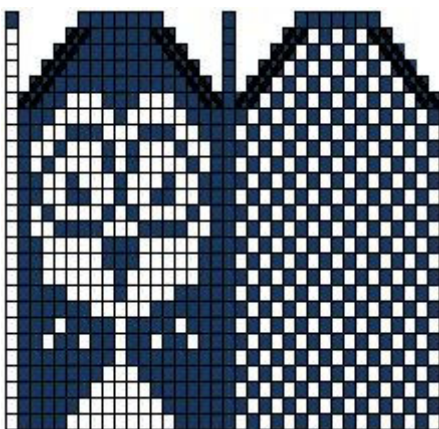
Iron on low temperature.

THUMBS:

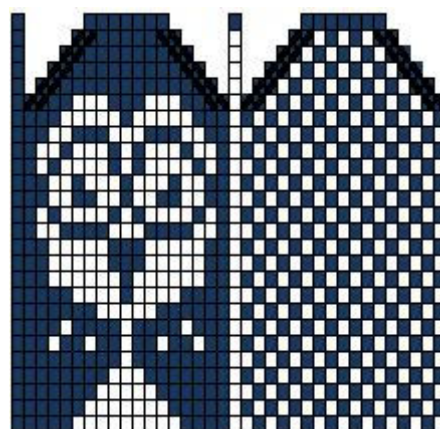
Left thumb: Transfer the sts on holder to a needle, pick up 1 st at left edge, pick up 16 sts from inside of thumb, pick up 2 sts at right edge = a total of 35 sts. Knit in pattern. Graft together using the Kitchener's graft technique when there are 16 sts left.

Right thumb: As for left except pick up 2 sts at left edge and 1 st at right edge!

LEFT THUMB



RIGHT THUMB



*I'll hope you'll enjoy knitting this pattern and wear its outcome with pride 😊
If you'll come across any errors please notify me at pansarknitting@hotmail.com*

Mooody owl mittens © 2010 by Anna-Karin Consoll www.pansarknitting.typepad.com



LEFT MITTEN - THE ANGRY OWL



RIGHT MITTEN - SAD OWL

