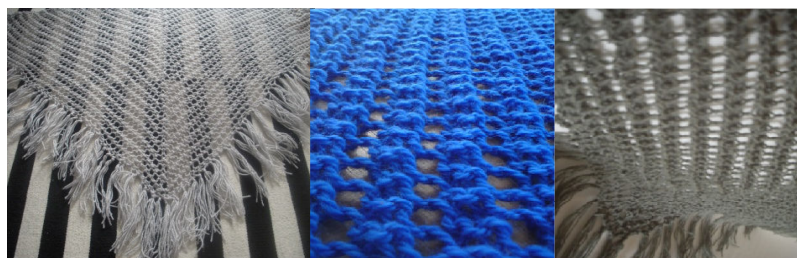


# PANSAR SHAWL



## Directions:

Cast on 3 sts.

Row 1: k3

Row 2: kfb, k1, kfb

Row 3: k2, yo, k1, yo, k2

Row 4: and all even numbered rows: knit to end

Row 5: k2, yo, sk2p, yo, k2

Row 7: k2, yo, k3, yo, k2

Row 9: k2, yo, k2tog, yo, k1, yo, ssk, yo, k2

Row 11: k2, yo, k2tog, yo, k3, yo, ssk, yo, k2

Row 13: k2, yo, k2tog, yo, k1, yo, sk2p, yo, k1, yo, ssk, yo, k2

Row 15: k2, yo, k2tog, yo, k1, k2tog, yo, k1, yo, ssk, k1, yo, k2tog, yo, k2

Row 17: k2, yo, k2tog, yo, k1, k2tog, yo, k3, yo, ssk, k1, yo, k2tog, yo, k2

Row 19: k2, yo, k2tog, yo, k1, k2tog, yo, k1, yo, sk2p, yo, k1, yo ssk, k1, yo, k2tog, yo, k2

Place a marker in the middle where the first flower structure has formed, *red box in the chart*.

From now on: repeat row 14-19, *marked with red brace in chart*. Every sixth row there will be one additional *k2tog, yo* at the right side and one additional *yo, ssk* at the left side.

Move up the marker as you go and it will be easier to keep track of the middle.

When the shawl has reached the desirable length, end with an odd number row.

Bind off loosely.

For fringes wrap yarn around a book 6 -8 inches wide and cut at one end. Take three threads/fringe and pull through a hole in the scarf, make a knot.

## MATERIALS:

**Needles:** Two sizes bigger than the yarn calls for

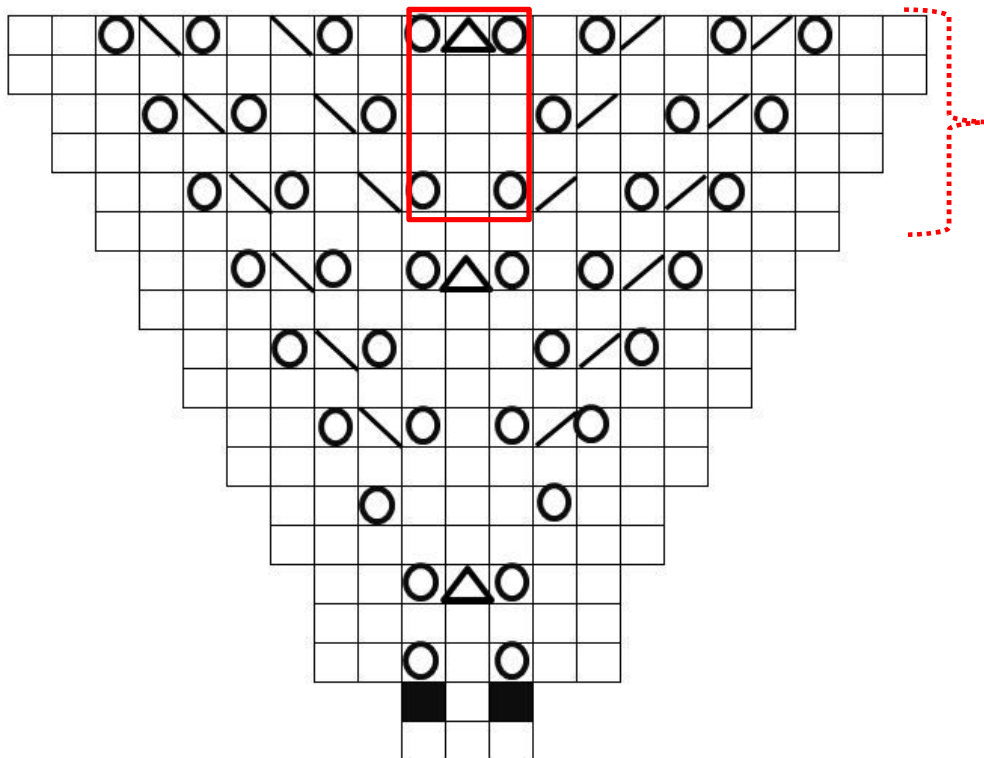
**Yarn:** your choice, I've knit this in lace weight, DK, and super chunky. It depends on what type of shawl you want, fancy or cozy. The yarn used for the blue shawl in the picture is Garnstudio Drops Alaska 300 g = 6 skeins on 8 mm/ US 11 needles.

## FINISHED

### MEASUREMENTS:

Measure along the flower pattern in the middle, when it measures approximately 80 cm/31,5 inches the shawl is wide enough to wrap around you.





- K - knit
- SSK - slip two stitches as if to knit, then knit those two stitches together
- k2tog - knit two sts together
- YO - yarn over
- KFB - Knit through front and back loop, 1 sts inc.
- SK2P - slip 1 stitch, knit two together, pass slipped stitch over

